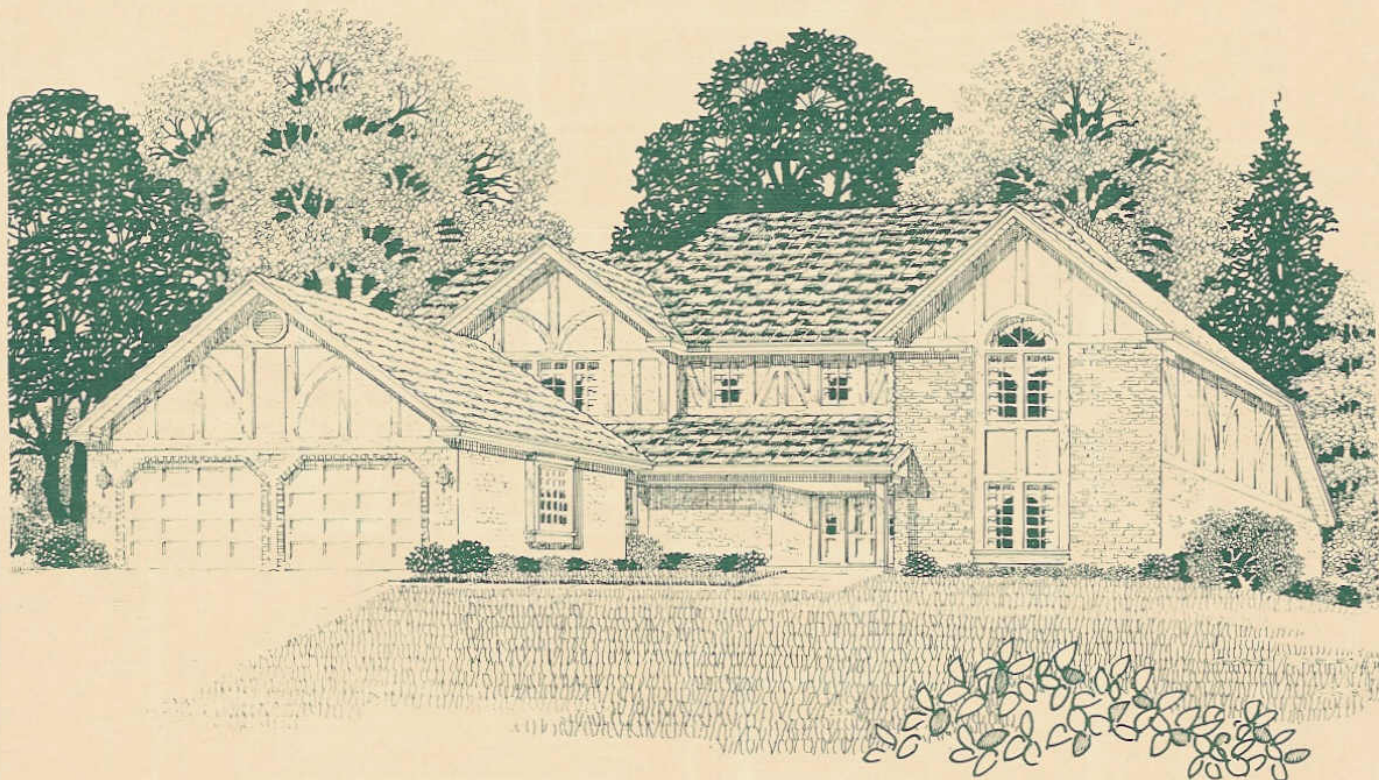




## Lake Ridge Club

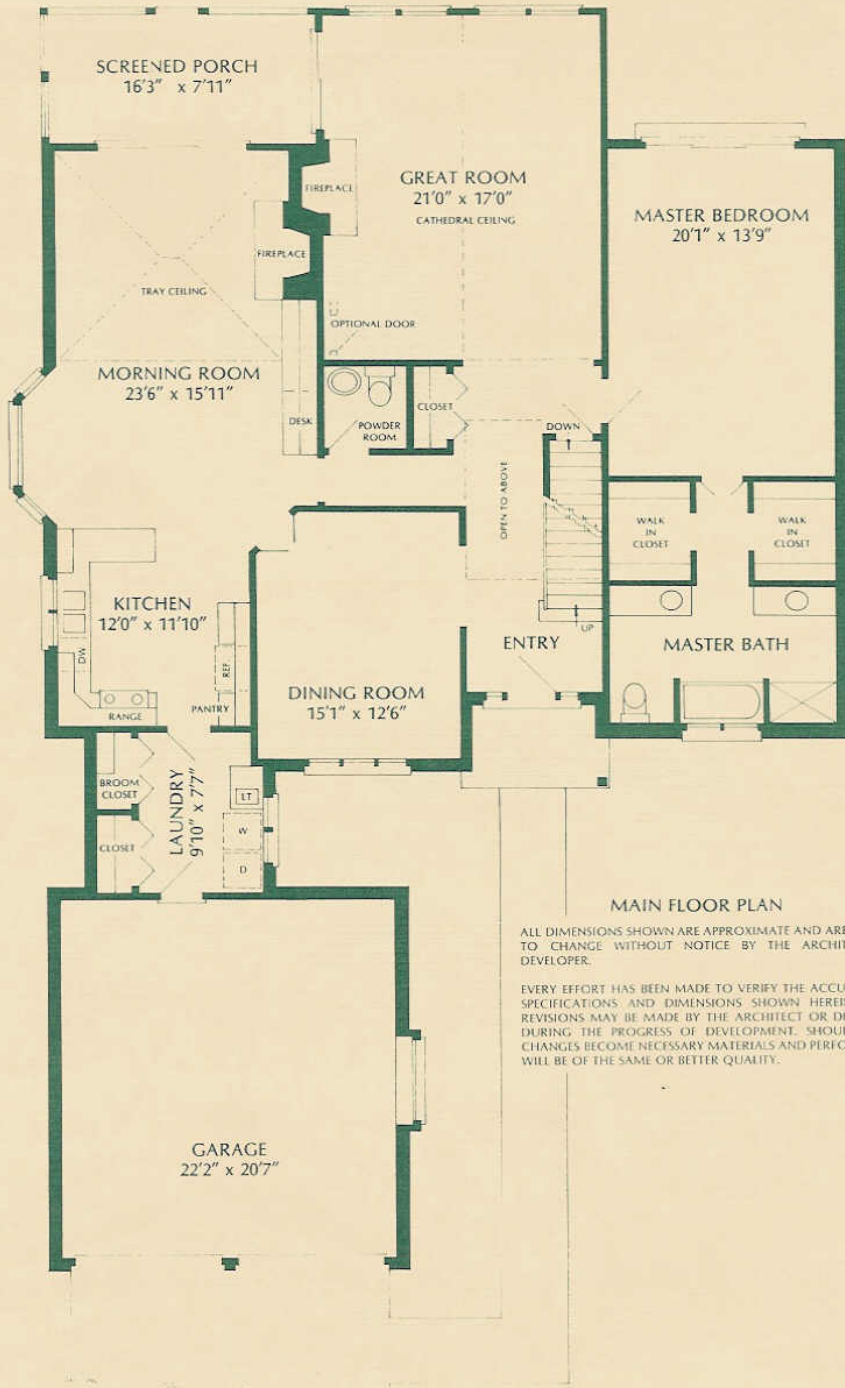


### *The Hampshire Residence*



*Callaghan Associates, Inc.*

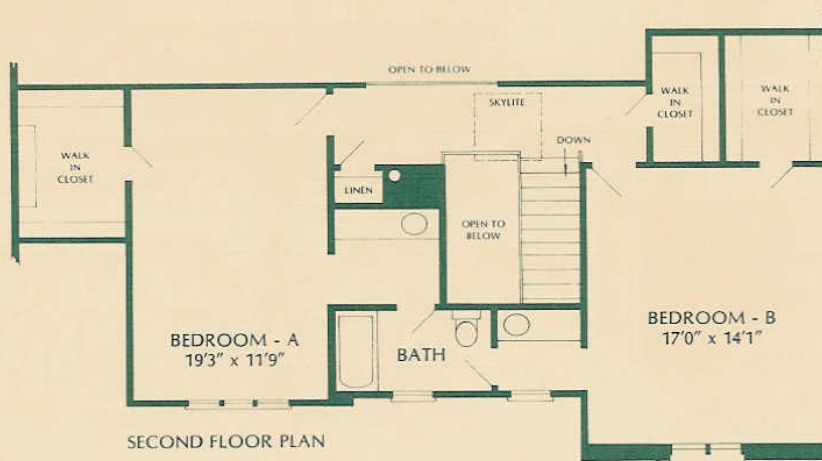
323-5050



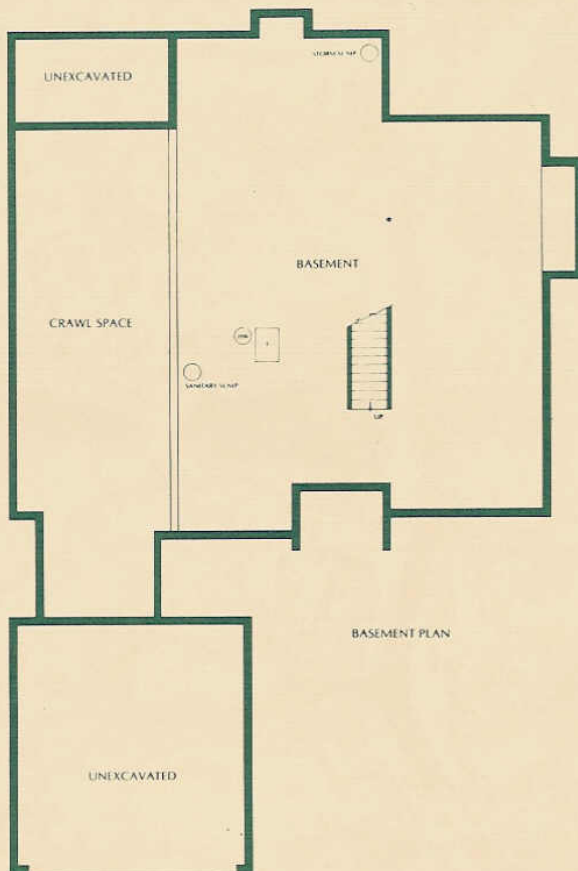
**MAIN FLOOR PLAN**

ALL DIMENSIONS SHOWN ARE APPROXIMATE AND ARE SUBJECT TO CHANGE WITHOUT NOTICE BY THE ARCHITECT OR DEVELOPER.

EVERY EFFORT HAS BEEN MADE TO VERIFY THE ACCURACY OF SPECIFICATIONS AND DIMENSIONS SHOWN HEREIN. SOME REVISIONS MAY BE MADE BY THE ARCHITECT OR DEVELOPER DURING THE PROGRESS OF DEVELOPMENT. SHOULD THESE CHANGES BECOME NECESSARY MATERIALS AND PERFORMANCE WILL BE OF THE SAME OR BETTER QUALITY.



SECOND FLOOR PLAN



BASEMENT PLAN

## THE HAMPSHIRE

*"A Two-Story"*

Approximate Square Footage:

Living area:	3,105
Porch:	130
Basement:	1,300

Added amenities include:

Kitchen, Breakfast Area and Keeping Room:	Oak floors
Keeping Room:	Fireplace, cathedral ceiling, desk and bar
2nd Floor Hall:	Skylite

\$ \_\_\_\_\_

Prices subject to change without notice.